

# Fardux

## Well Services Software Package

### Bringing clarity to complex data collection

Fardux prides itself on providing a solution for a broad spectrum of operations. Our Well Services software offering, along with its associated hardware system is a proven, comprehensive solution for data acquisition and visualisation that can be tailor-made to suit your needs.

### OVERVIEW

Fardux software has always been central to our success in the data acquisition and process control market. Our software has always been HMI intuitive, logical and particularly easy to understand; this is just one of the reasons our clients come back to us time and time again.

The software has been designed as a core product framed initially by the selection of one of a number of USB security dongles, in this case the Well Services version.

The Well Services package can then be further honed in to your requirement to include a large range of selectable bolt on functions, which we call features. The selection of these additional features defines the functionality of exactly what the application code delivers.

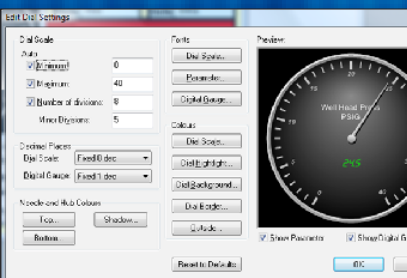
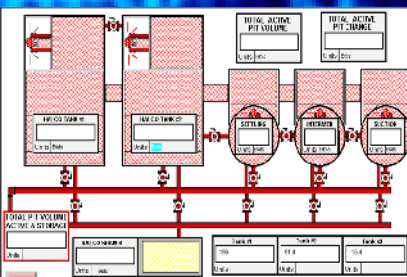
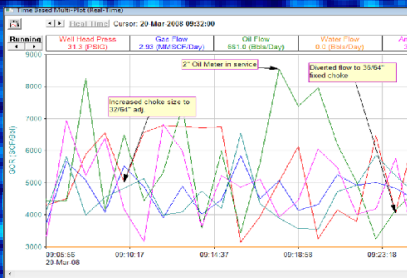
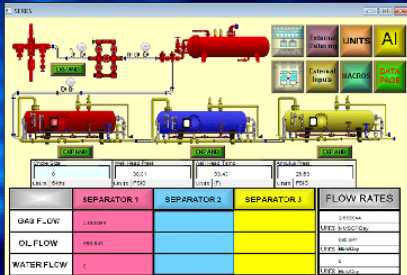
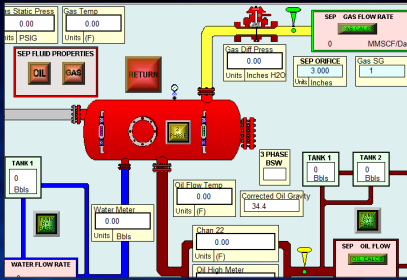
This software is compatible with Fardux's Well Services Logger only, and communicates with the hardware via RS232 cable connection.

As always with Fardux products, we set out to get the job done with the minimum amount of complexity and maximum logical clarity. This basic principle hasn't changed since 1990 and is still as important now as it was back then.

Fardux software is recognised as a function rich, easy to understand application, fully supported and maintained through Fardux licensed technical support and maintenance programmes. Training courses on Fardux products are also available, and include in depth learning of software features and application linked functionality.

### KEY BENEFITS

- **Easy to follow installation software.**
- **Zoom Function.** Unlimited highlighting to produce the finest detail.
- **Full Window functionality.** Including browse, cascade, tile, print preview etc.
- **Auto scaling of all plots** as well as manual scaling override.
- **Calibration of all logged analogue channels** via ten point matrix
- **Screen application schematics.** Engineering data pasted to appropriate positions.
- **CSV data export.** Importable into commercially available spreadsheet software.
- **Choice of engineering units.**
- **Full icon-driven functions.** Comprehensive tool bar and status bar control.
- **Real-time plot analysis.** Cursor gratitule historical information selector.
- **Alarm level set points.** Internal and external.
- **Sequence of events.** Event log filter for manual and automatic entries.
- **Self controlled programme suite.** Plots and reports can be viewed from within the application environment.



ALL THE DATA, WHEN AND WHERE YOU WANT IT

## WELL SERVICES PACKAGE FEATURES

Features are controlled by HASP dongle programming which can be changed by uploading a V2C file sent by email. In this manner, what might start off as a relatively simple software package can be enhanced by adding 'bolt-on' features as and when they are required. Of course if these additional features are not required, then the product's entry costs are reduced.

This approach allows Fardux to enable software features in accordance with a clients specific requirement and also in keeping with any budgetary restrictions ensuring spend is totally aligned with required functionality. Software platforms include stand alone server; network client; web client; web server and web based browser.

The software installation for all of the Fardux Data Logger hardware product is the same application code. Differences between one software application and another, and a wide range of functionality within any given product, are feature controlled by the way the security dongle is programmed.

The following table shows features that are available as standard with the Well Services Lite Package, as well as those that are available as additional 'bolt-on' features.

	Standard Package Features*	Available as Bolt-on Feature
12 Channels	✓	
Auto Channel Configuration	✓	
Separator Configuration Single Vessel	✓	
Internal and external alarms	✓	
Gas setup	✓	
Oil Setup	✓	
Water setup	✓	
Log to disk	✓	
Special Values	✓	
Calculation control	✓	
Random number simulation	✓	
Operator message	✓	
Units setup	✓	
Cascade	✓	
Tile horizontal	✓	
Tile vertical	✓	
Standard channel number	✓	
Channel enhancement	✓	
Single separator	✓	
Staged Pumping	✓	
Depth Encoder	✓	
Plot Against Depth		✓
Dual Channel Plots	✓	
Multi Channel Plots		✓
Standard Reports	✓	
Custom Reports	✓	
MODBUS Master Single Port		✓
MODBUS Master Multiport		✓
MODBUS Slave Single Port		✓
MODBUS Slave Multiport		✓
MODBUS 4 Master/Slave Combo		✓
MODBUS Multi Drop Master Single		✓
WITS		✓
WITS Realtime		✓
Bulk Import		✓
Surface Drilling Fluids		✓
ASCII		✓
Macro		✓

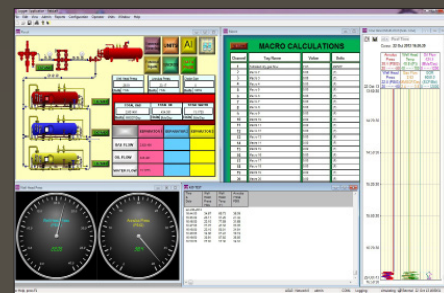
\*Final product features should be confirmed at point of sale.



## WHY FARDUX?

We have always believed that the supply of our oil and gas data acquisition products and solutions is just the beginning of our relationship with our customers.

We endeavour to provide support from the moment the decision is made to purchase any product, and then throughout the product's lifecycle. We always work hard to ensure our customers are provided with the best solutions, support and advice.



## All the data, when and where you want it

### HEAD OFFICE

Crossways Business Centre,  
Stalham Road,  
Hoveton,  
Norwich,  
UK,  
NR12 8DJ  
Tel: +44 (0)1603 777980  
Email: sales@fardux.co.uk  
Web: www.fardux.co.uk

### UAE OFFICE

Building 7WA  
Office 1031  
PO Box 293815,  
DAFZA  
Dubai,  
UAE  
Tel: +971 (4) 2555003  
Email: sales@fardux.ae  
Web: www.fardux.ae